

spring/summer 2023

animate

The magazine of the National Animal Welfare Trust

Cost of loving

How the pandemic and economics are affecting pets in rescue

Happy tails

The rehomed pets enjoying life in their forever homes

Putting the love into pre-loved shopping

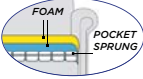
Our Spring collections online and in-store



TRULY MADE-TO-MEASURE RISE & RECLINE CHAIRS AND ADJUSTABLE BEDS

RISE & RECLINE CHAIRS

Ultra comfort
pocket sprung
AERO-seat option



Choose from our extensive
range of chairs and selection
of 400 fabrics & upholsteries



**BOTH
SEATS RISE
& RECLINE**

Kent two-seater single motor rise
and recline settee (one size only)



**NEW
ELECTRIC
SOFA BED**

✓ CHOICE OF WIDTH ✓ CHOICE OF DEPTH ✓ CHOICE OF HEIGHT

£300
Part exchange for
your old furniture
OFF
THE 1ST ITEM



50%
OFF
THE 2ND ITEM*

ADJUSTABLE BEDS



**DRAWERS FOR EXTRA
STORAGE**



5 YEAR
WARRANTY INCLUDED
FREE WITH EVERY
MECHANISED ITEM

**Flexible
finance
packages
available**

ssafa the
Armed Forces
charity

“Key benefits
of elevating the
legs include
less swelling, enhanced
healing, improved
mobility... better
quality of life”
Dr Rob Hicks



- ✓ **FREE** home demonstration
- ✓ **FREE** home delivery and set up
- ✓ **FREE** nation-wide service
- ✓ **NO** cold calling
- ✓ **FREE** removal of old furniture

18
17
16
15
14
13
12
11
10
9
8
7
6
5
4
3
2
1
0

CALL FREE TODAY FOR A FREE BROCHURE & HOME DEMONSTRATION

0800 808 6873

www.mobilityfurniturecompany.co.uk/sale

*The 50% offer is taken from the least expensive item and must be ordered at the same time.



**HANDCRAFTED IN
GREAT BRITAIN**

Welcome



So many of us are feeling the pinch at the moment and having to make all sorts of new and tough decisions, which we might never have had to make before.

Running a charity we see how this affects people, and how that in turn has an impact on pets. Pet owners are giving up their animals due to their changing circumstances, and sadly there are far more cases of abandonment and neglect – as our main story on page 6 illustrates.

It's a double whammy for charities like ours, because it means our services are desperately needed by increasing numbers of people; but at the same time we too face rising running costs and other inflationary pressures on many goods and services. It all has an impact on the amount of animals we can help.

As ever, we couldn't do what we do without your help and thank you for continuing to support us in whatever way you can.

Thanks to you, we are doing all we can to feed, house, and care for animals facing some truly desperate circumstances.

In return, I want to assure you that we are trying to manage our costs and finances as robustly and as carefully as you would expect us to. And we will continue to look for other ways to diversify our income by trying new and different initiatives.

Thank you for your incredible support, as we weather the storm together.

Rob



Save our Safe Place update

Last year we launched one of NAWT's largest fundraising initiatives for a while to help rebuild our crumbling Bedfordshire Centre just outside Milton Keynes.

The project is making great progress and we are looking forward to opening our doors to more animals onsite sometime this summer.

Since the Save our Safe Place appeal launched, we have received many kind and generous donations from individuals, local businesses and other organisations. This includes a grant of more than £132,000 from Pets at Home Foundation in January which will help fund our three new cattery buildings.

We want to take this opportunity to thank everyone who has donated so far, especially because we know how challenging times are at the moment.

Bedfordshire's building appeal still has some way to go, with £165,000 left to raise in 2023. We have a number of fundraising initiatives planned including our latest appeal, which you can find on page 16.

Hello to Lisa

We're delighted to welcome new fundraising manager and proud "Doberman mum" Lisa Harrison-Byrne to NAWT.

Having worked for many different charities from victim support to sight loss, Lisa decided to take the plunge and pursue her passion for helping animals after a change in her own personal circumstances last year.

She said: "It's animals that are my real passion. I think it's because they can't speak up for themselves and that's what makes the work that NAWT does so important.

"I've always avoided working with animals because of coming to know stories about animal cruelty. What I know now from being at NAWT, is for every horrible situation there are five wonderful ones."

When she's not working, Lisa loves to spend time with her rescue Doberman Kiara or be outside working in her beloved garden.



National Animal Welfare Trust

Tylers Way, Watford, Herts WD25 8WT

Tel: 020 8950 0177

www.nawt.org.uk

If you no longer wish to receive *Animate* magazine, please email supportercare@nawt.org.uk

Our cover image of Paddy is taken by fundraising and supporter relations officer, Amy Hall, with the help of dog handler, Kat Houghton. Read more about Paddy on page 11. Collar and lead by The Cornish Dog Co.

Remember and be remembered

Share your
life story
with the
people
who matter
most...

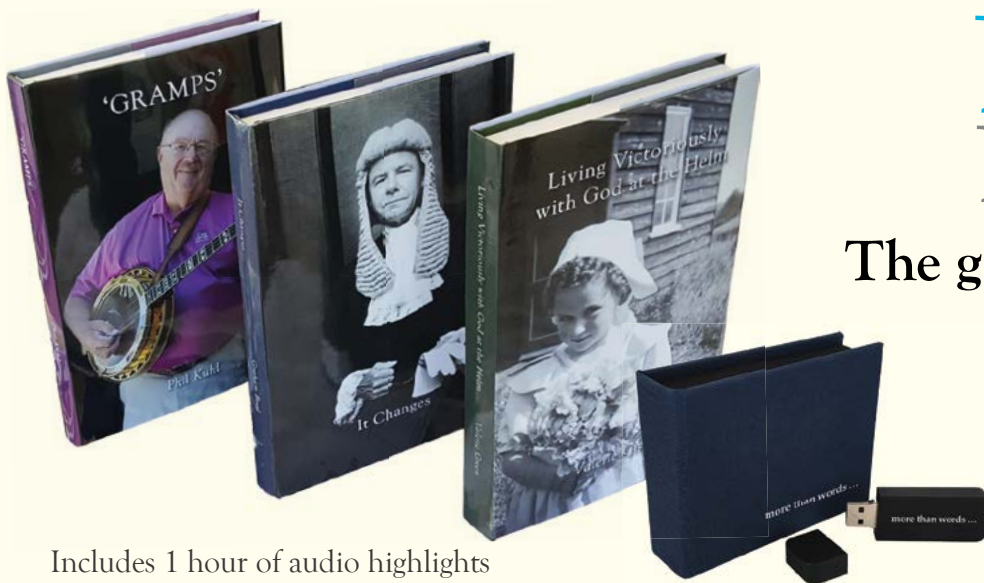
Your family

PRESERVE YOUR PRECIOUS MEMORIES

Your life is something to be proud of. Share your memories, your legacy and your life with your loved ones in a beautiful book that captures your voice and preserves your family history forever.

Now is the time to write your life story, a chance to re-live your experiences and share your treasured memories with your family. LifeBook is here to help you create a precious memoir of your life, capturing your history, your

unique adventures, your thoughtful learnings, your life lessons and your values in a beautiful handcrafted book that you will be proud to have written. Leave a priceless record and legacy, preserved forever for your family.



Includes 1 hour of audio highlights
and 10 copies to share with your family

Life Book

The gift of a lifetime

Reserve
your place

NOW

Call 0800 086 1768 today

or visit www.lifebookuk.com

And find out how easy it is to get started...



Barry trots over the rainbow bridge

One of Berkshire Centre's most popular residents, Barry the pig, has died.

The sociable kunekune cross shot to fame in 2020 when the field where he once shared with a sheep called Bjork became flooded. The team quickly realised Barry not only hated mud, but he also didn't like swimming in the floodwater. A fundraising campaign to divert the flooding from his home was a huge success and raised thousands of pounds for the centre.

Barry was always ready to welcome new visitors to the farm and would often come over to the fence to greet people. One of the team's favourite memories was watching him sleep and snore loudly while a group of corporate volunteers were strimming the ground around him; he never stirred once!



Thank you for a double surprise

We want to thank everyone who supported us in our Double Donations Campaign at the end of 2022. We know it's been a very tough year for all financially and so it is incredibly humbling to see such generosity. You helped us raise a total of £76,406.04 across the whole charity which is a huge achievement.

We are planning something new for this year's campaign so keep a close eye on our social media and newsletters for more information later in the year.



We've changed our look!

We hope you enjoy reading the re-designed *Animate* magazine this issue. The new look follows feedback from supporters and team members following a survey last year.

Let us know what you think – if you'd like to share any thoughts on the new look, then please feel free to drop us a line or email us at fundraising@nawt.org.uk.



What's coming up?

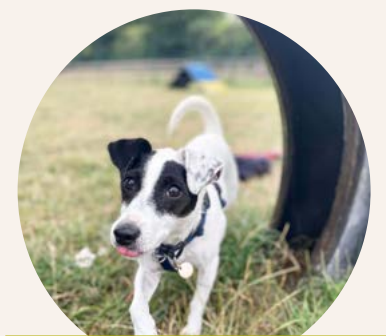


The Big Rescue Reunion

When: 3 June 2023

Where: The Rockpool, Gwithian TR27 5ED

Whether a NAWT rescue dog or not, all four legged friends are welcome at this event taking place in the sandy confines of The Rockpool beach café. The business is a huge fan of the National Animal Welfare Trust and regularly hosts walks and rambles to raise money.



OPEN DAY

When: 13 August 2023

Where: NAWT Berkshire, Trindledown Farm, Great Shefford RG17 7DQ

Come and enjoy the peaceful surroundings of the Berkshire countryside this summer. There will be stalls, dog shows and plenty of other attractions happening throughout the day. Bring your friends and family and enjoy!

Cost of loving

Right now National Animal Welfare Trust is experiencing the same harsh realities as most other rehoming organisations across the country. Rising living costs are driving up the number of animals needing to be relinquished by their owners and requiring new homes. And sadly, there are an increasing number of cases involving cruelty and neglect. The RSPCA recently revealed it handled 25% more abandonment cases and 13% more cruelty cases nationally last year compared to figures from the same time period in 2021.

At NAWT's busy Hertfordshire centre, 141 dogs and cats came in as strays for the period running August 2022 to January this year, compared to 79 in the same period pre-pandemic (2019/20).

Wendy Richmond reports on the impacts being felt across the centres.



Evie after recovering from her ordeal

Evie and Frankie's Story

This is Evie, who came to the Cornwall centre hours before Christmas Eve, after she was found abandoned in a dreadful state with her two tiny pups. Covered in fleas, their bellies swollen with worms, the hungry trio were so drained of energy, mum Evie could barely lift her head up to feed herself. Sadly one of her pups, Murphy, didn't make it through the first night.

Over the next few days, Evie and her surviving pup, Frankie, were given round-the-clock care. They started to gain strength after a few days. Now Evie and Frankie are enjoying new lives in loving homes, but the fates of all three animals could have been so different had they not been found and brought in that cold winter night.



Frankie on his first night



Frankie on the mend

"We thought COVID was a challenge but in all the years of working in rescue, I've never known it to be so bad." These are the words of Jackie de Friez, who's been managing the Hertfordshire rehoming centre for more than a decade.

Sadly, her sentiments are echoed elsewhere across the charity. All are noting rising numbers of abandoned, sick or behaviourally-challenged animals coming in, placing additional demands on scarce resources.

Multiple dogs are coming in as victims of over-breeding

"Caramel was approximately eight weeks pregnant when she came in from the dog warden," said Jackie. "She had deformed nipples and we think had been overbred. She moved in with our live-in staff so that she could be constantly monitored and later gave birth to seven little puppies. Poor Caramel was so tired from giving birth to her puppies that she couldn't look after them properly so in the end they were hand reared by an amazing fosterer. Foster carers are such an important part of our team."

The arrival of new mums and litters brings additional demands on resources: more space needs to be created to house the litters, while the team need to spend more time ensuring newborns are being given proper care and socialisation.



This is Caramel when she first arrived at the centre heavily pregnant. Now she's enjoying life in her new home.



The pandemic puppy hangover

Prices rocketed for new dogs when lockdown hit. Three years on, demand has long fallen away, leaving rescue centres overwhelmed with the numbers of unwanted dogs.

Over in Clacton Manager, Lizzie Reffell said: "We had a litter of Labradors come in not long ago. Labrador puppies in rescue? That would have been unimaginable a few years ago. Of course it's not too difficult to rehome a litter of Labradors but then that means it's harder for the other breeds of dog to find homes."

The other trend Lizzie has noticed most recently is the number of multiple pets needing to be relinquished by their owners.

"It's not just a case of handing in one dog here or a single cat there. People are wanting to give up many pets. We had four border terriers come in from a single house. While we will try to keep them together, it's not as easy to rehome multiple pets so then we have to consider splitting them up to help them find a new home."

Helping the large dog breeds find homes

As well as the smaller breeds, there are larger dogs coming in. Our Bedfordshire Centre has been dealing with several of these this winter. Typically arriving as boisterous adolescents, these dogs need specialist training and handling to help prepare them for a new home.

Manager Carley Farr mentions Frank, an Italian mastiff breed called a Cane Corso, who weighs around 65kg.

She said: "He weighs as much as some of the team do so it's a challenge taking him out for walks as he's so strong. We have to think about having two members of the team walking him together at once which means it's taking longer to walk the other dogs in our care."



Other animals are also affected

While the current effects are being seen most severely amongst dogs, other species like cats and small animals are also feeling the impact. A year ago *Animate* carried a story about being overrun by rabbits. At the Berkshire Centre, they operate a long waiting list for rabbits, and then there are the abandoned cases like Dav. She was found in February near to a spot where the RSPCA rescued another three rabbits after receiving reports about a group of 10 dumped next to a busy main road.

Manager Tracy Waldron said: "Dav was one of the lucky ones but sadly, her story is not an unusual one."

Hearing all these stories, it highlights the strain it must have on the teams having to deal with these situations each day. As ever, it's their complete dedication to the animals that gives them their resilience, as summed up by Jackie at Hertfordshire Centre.

"The animals are what keep the teams working in all weathers and in difficult circumstances. They do all they can for the pets in our care because they are in such desperate need of help. For some animals NAWT is their only hope. We will get through it by digging deep."



Lucky rabbit, Dav

Comparison of stray signovers at NAWT Hertfordshire Centre			
	August 2019 – January 2020		August 2022 – January 2023
Dogs from animal wardens and pounds	28	▲	76
Stray cats	51	▲	65



My life in walks and cuddles



Jim Connolly

“What I love about the Pet Care in the Community scheme is it’s about helping pets and owners to stay together.”

MEET JIM CONNOLLY. HE WORKS IN FINANCE AND VOLUNTEERS FOR THE NAWT’S PET CARE IN THE COMMUNITY SCHEME

Tell us about your volunteering?

Right now I travel every weekend from Barnet to Watford to take Libby, a rescue Galgo, a type of Spanish greyhound, for a walk. Libby’s owner has a problem with her hip which limits the time she can walk Libby. She contacted the NAWT for help through the Pet Care in the Community scheme. The scheme aims to prevent people from rehoming their pets when they are struggling to look after them for whatever reason. Linda, the Volunteer Manager, spends a lot of time matching volunteers with both the owners and pets. When Libby’s situation came up, I was asked if I was interested.

What is a typical walk with Libby like?

I normally take her for an hour on a lead walk around Cassiobury Park in Watford. Libby can be nervous and is not that keen on small dogs but the park is so big we can walk in quieter places where she feels more comfortable.

I’ve been doing this walk since the beginning of the year. Libby and I are starting to develop a bond and I am also aware Libby’s owner has had to put her trust in me to look after her dog.

Building up that trust with both Libby and Libby’s owner is something that I’ve found rewarding.

Do you have any pets of your own?

We’ve got a cat called Layla. She’s a short-haired tabby adopted from the NAWT Hertfordshire Centre. She was a stray and has slowly come out of her shell a little bit more. However, she’s still quite a nervous little cat and while we do think about getting another pet as we love how they make a family, we don’t think it would be fair on Layla.

What do you want to say about volunteering?

What I love about the Pet Care in the Community scheme is it’s about helping pets and owners to stay together. For a short time I volunteered at the Watford Centre and it was always very sad seeing a pet come in especially when they were elderly. Both the pet and owner would clearly benefit from remaining together. In Libby’s case, she’s able to stay with her owner and get the exercise she needs which is a win-win. I enjoy taking Libby out and her owner knows her dog is getting a nice long walk.

Layered with
24-carat
gold

Commemorated on 24 golden bars The beautiful songbirds of our continent

No ongoing
commitment,
no further shipments!



Blackbird White wagtail Bonelli's warbler Blue tit Jackdaw Jay Magpie Skylark Common redstart Yellowhammer
Greenfinch House sparrow Nuthatch Wallcreeper Nightingale Golden oriole Barn swallow Robin Sedge warbler Waxwing
Firecrest Starling Goldfinch Wren Common reverse

Size of each golden bar: 35 mm x 15 mm

- Finished with beautiful colour detailing
- Strictly limited to only 9,999 sets worldwide
- Highest minting quality 'Proof'
- Available exclusively from WINDSOR MINT®

for just 7 instalments of
£19.95
or the full amount of £139.65
(instead of £719)



Your FREE gifts:

- A useful garden tool set
- Elegant display case



Customer Service Office: Windsor Mint, 11 Lowesmoor Wharf, Worcester, WR1 2RS
Order Line: 01905 330999 Monday to Friday 9am - 5pm
Email: service-uk@windsormint.co.uk
WINDSOR MINT® is a brand name of HMK V AG.
Responsible in terms of GDPR and Trade Partner: HMK V AG, Leubernstrasse 6, CH-8280 Kreuzlingen

ORDER NOW AND SAVE ALMOST £580



YOUR ORDER INFORMATION:
Reservation No: 671A-01

YES! I want to order the strictly limited 'European Songbirds' complete set of 24 golden bars (Item No. 196-492-5) – please choose:

- I would like to pay in 7 monthly interest-free instalments of £19.95 each.
 I would like to pay the full amount of £139.65 (instead of £719).

There will be no further shipments and no further obligations.

Please ensure you tick above if you prefer to pay in 7 instalments, otherwise we will debit the full amount. Your set will be sent POSTAGE FREE and with a guaranteed 60 days right of return.

Title										First Name									
Surname																			
Street / City																			
Postcode																			
Tel. No. (in case of queries / optional)																			

My payment of £ _____ is made by:

Cheque/postal order made payable to Windsor Mint Mastercard Visa

Name on card: _____

Card Number: _____

Expiry Date: _____ Please debit my card for this delivery.

All orders are subject to availability and acceptance. Please allow up to 28 days for delivery. All items are sent under Windsor Mint's 60-day NO OBLIGATION GUARANTEE. If you do not return any item(s) within 60 days you agree to pay the invoiced price. By placing an order you are confirming you are 18 years or older. All prices include VAT at the current rate. A credit check may be carried out. You may stop collecting at any time by simply notifying us. In order to send you information and special offers from us and selected other companies, we work with your data on the basis of the GDPR, Art 6 (1f), also with the help of trusted suppliers. If you agree that HMK V AG may use your telephone information for marketing phone calls, please tick the box. This agreement can be cancelled at any time. You can find further information in our [privacy statement](#), which you can see at any time on www.windsormint.co.uk or request in print from our customer service. You can cancel the use of your details for marketing purposes at any time by sending a simple message to Windsor Mint, 11 Lowesmoor Wharf, Worcester, WR1 2RS.

Give us a call! **01905 330999** Everyone ordering by phone will receive a FREE surprise gift

All orders are subject to our Terms & Conditions, available on request or at www.windsormint.co.uk
Trade partner: HMK V AG, Leubernstrasse 6, CH-8280 Kreuzlingen

Signature: _____ Today's Date: _____

Please fill in your details above and post in an envelope to: Windsor Mint, 11 Lowesmoor Wharf, Worcester, WR1 2RS Or, for faster delivery, order by phone: 01905 330999 • www.windsormint.co.uk



Florence, Bobby, Tommy & Bunny

Rehomed: December 2022

**Centre: Berkshire
Adopted by:
Sophie Evans and
Conan MacDermott**

The flock having a field day with their new friends

The flutter of tiny trotters can be heard down at Watery Lane in Berkshire since the arrival of four sheep from Trindledown Farm.

The four youngsters were at the Berkshire Centre for a couple of years and became regular faces to visitors at the site. Bobby was probably the most boisterous of the bunch and would often stick his head through fences for a chance of some food.

The quartet have been rehomed by Sophie and Conan at their farm and now share a field with two small goats and a rescue pony. Conan used to volunteer at NAWT's Berkshire Centre and remembered there were field animals available for rehoming. They were delighted to be able to offer them a new home.

Sophie says: "The sheep are doing very well with their new friends in the field and most recently they've been joined next door by our herd of 15 alpacas. They've just come out of their winter barn and all the animals are getting on well together. Our animals bring us so much joy each day and the sheep are no exception – they are definitely little characters!"

The Trindledown sheep are no strangers to alpacas as the Berkshire Centre is famous for its alpacas too.

Sophie and Conan breed alpacas and Sophie uses alpaca fibres to spin, weave and make rugs which she then sells. Sophie was keen to have sheep join the farm so that she could start working with sheep fibre. You can check out the alpacas, sheep and Sophie's rugs on Facebook and Instagram at Watery Lane Alpacas.

Pretzel (Zazu)

Rehomed: January 2023

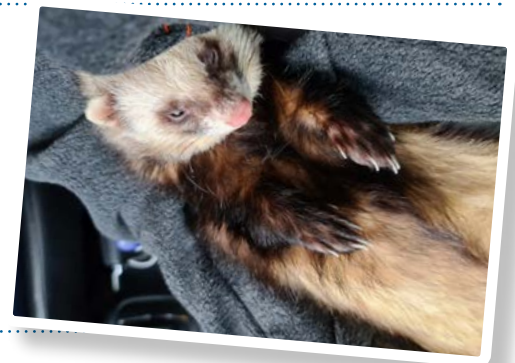
Centre: Hertfordshire

Adopted by: Lottie Capel

Lottie says that Zazu, now known as Pretzel is the sweetest boy. He absolutely adores playing with his toys and his two new brothers, Toast and Nugget.

The first time he met them he was so excited, now the three of them love cuddling and playing together.

"He is the perfect addition to our little family and he is such a happy and curious boy."



Milo

Rehomed: February 2023

Centre: Bedfordshire

**Adopted by: Hazel and
Reza Zahedi**

When Shih-Tzu Milo arrived at the Bedfordshire Centre, he had very matted fur. This was causing the dog some discomfort but thanks to the kind support of nearby Brittanya Grooming Salon, Milo underwent a fur-tastic transformation. And at last Milo was able to finally show off his handsome features.

It wasn't long before he found himself a new home as the companion of Hazel and Reza Zahedi. Hazel says Milo has started exploring his new neighbourhood on his walks and is learning not to react when he meets someone new. His favourite treat is a little piece of ham.





Mr Evans

Rehomed: January 2023

Centre: Clacton

Adopted by: The Roes

Jayne and husband, Peter, both spotted Mr Evans on the centre's Facebook page when he first arrived there as a stray. The elderly cat is exactly the kind of animal the couple love to care for. Their first rescue cats were an elderly pair from Clacton called Willow and Rooney (See *Animate* AW 2019). When they passed away, they were joined by Theo, a 20-year-old Persian with dementia, who they rehomed after his previous owner had died.

Mr Evans, who suffers from renal failure, is currently enjoying a bedroom all to himself in his new abode. In time, the Roes will introduce him to his new friends Wiley, another elderly gent, and FILBY, the youngest member of the household whose name stands for Found in Lay-by as that is where the couple found her as an abandoned kitten hidden among some rubbish bags.



Lucy

Rehomed: October 2022

Centre: Cornwall

Adopted by: Jason

Lucy arrived at the Cornwall Centre with her two sisters, Cody and Susie, after living on the street as strays. It was obvious from first glance that this young cat was pregnant and her body under enormous strain. A week or so later, Lucy gave birth to three ginger kittens who were named Mango, Chutney and Pickle.

In spite of being born at the centre and as far away as possible from the cold streets, at just 75g, little Pickle was just too tiny to carry on and passed away a few hours later.

Lucy and her two remaining kittens continued to thrive and were soon strong enough to move into a foster home where they were raised by Jason until the babies were ready to head to their forever homes.

Mango and Chutney (now Mango and Jasper) remained together and are enjoying a new life with their forever family.

Once her kittens left, Lucy stayed on and Jason introduced her to his home's other feline resident, Pigeon, pictured with Lucy (right).. Their meeting was a success and now Lucy spends her days causing mischief and taking well earned cat naps with Pigeon.



Still waiting...

Paddy

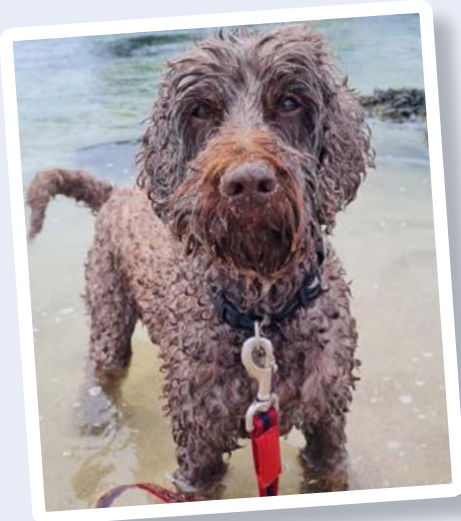
Centre: Cornwall

Our cover star Paddy came to us at the Cornwall centre aged nine when his family were no longer able to care for him. It wasn't long before Paddy headed out to a new home where he was to live with a new sister. Sadly, Paddy struggled because of his resource guarding and the difficult decision was made for him to come back to NAWT Cornwall.

Paddy's been down on his luck for a while now and the team are looking for someone with no other pets, ideally living near Hayle to take him on. That way the centre's behaviourist can help him settle into his new home.

Paddy is a fun-loving guy who loves to learn new tricks, have a go at agility and play with interactive toys. He loves water so beach trips are a firm favourite!

Can you find the perfect home for him?



Putting the love into pre-loved shopping with NAWT

Buying from our online and physical charity shops is just one of the ways you can support our rehoming efforts. All the profits from our shops help us continue rescuing and rehoming animals in need.

From pre-loved fashion and books to pet accessories and gifts for a loved one, we've got something for everyone at our charity shops in-store, online and onsite.

Thanks to the generous donations given to us, we're frequently adding new items every week and we are always on the look out for new stock – you can drop off your unwanted, good quality items to our high street charity shops.



Volunteer Irene helps with stock and displays at our clothing barn in Berkshire

The love for pre-loved

For a charity like ours, pre-loved shopping is all about sharing the love. That's because everything we sell goes towards looking after the animals in our care. And because it's all pre-loved, this also means everything sold in our shops gives products a longer lease of life, meaning less items ending up in landfill.

Where to shop with us

Our charity has an eBay shop as well as three high street shops in Hayle, Watford and Woburn Sands. Our Watford and Berkshire centres also have shops onsite too like our newly revamped clothing barn at Trindledown Farm.

Our eBay shop

If you can't get to one of our physical shops, then visit our eBay shop where you'll find 100s of items, including high end fashion.

Find our eBay shop here



Bold flowers for a summer day

Shop this spring/summer's fashion trends

We like to keep a close eye on what's happening in the high street to make sure we offer you this season's fashions, at great prices. This spring/summer's trends are a mix of loose fitting denim and elevated basics such as oversized jackets – and the highly decorative such as bold floral prints, dramatic hem lengths and sheer and fringed fabrics.

As these fashion statements start to make their way into our mainstream stores, our eBay and charity shops won't disappoint, with preloved bargains ready to be snapped up. **Turn to page 16 to find our shop addresses.**



Sheer-style mixed with casual comfort

This dress is heart stopper

Stand out with a shimmery fringe

Why have a stairlift when you could have a real lift?

A Stiltz Homelift will help you continue living in the home you love.

Stairlift? No Thanks

A Stiltz Homelift is an ideal and affordable alternative to a stairlift. You can now safely travel between the floors in your home while keeping your stairs the way they have always been.

Neat & Discreet

A Stiltz Homelift can be installed into almost any room in your home. A Stiltz is uniquely compact with the smallest model taking up just over half a square metre – now that IS discreet. The homelift plugs directly into a standard domestic socket and uses less power than boiling a kettle. The homelifts run on self-supporting rails so there is no need to drill into walls and the motor is fully self-contained within the lift car. Neat.

Your Forever Home

While some Stiltz customers have an immediate need for a homelift, others are looking to future-proof their existing home for when the stairs do eventually become a challenge. Don't go through the unnecessary

expense and emotional upheaval of moving house or the disruption of adapting your home for downstairs living. Save money instead; live comfortably and independently in the home you love for as long as you want, with a Stiltz Homelift.

"We've had our lift for 2 years and were so impressed with how it was fitted from our hallway to our landing in what at first appeared to be an impossible space. And in such a short time."

Mr. Eames

Peace Of Mind

Stiltz are proud to be rated 'Excellent' by their customers on Trustpilot. They use their own teams of expert installers, so you can choose a Stiltz Homelift with complete peace of mind, knowing you and your home are in a safe pair of hands.

"Excellent product installed by polite and very competent tradesmen. Fits perfectly into my home. Made a huge difference to my ability to live independently".

Mark via Trustpilot



"The through floor lift fits neatly into the house and was quickly and neatly installed. It has been reliable and has enabled us to live a 'normal' home life using the first and ground floors. A stairlift would not have done so."

Mrs Goddard via Trustpilot - Jan 2021

Free, No Obligation Survey

A Stiltz Homelifts Consultant can visit your property to help you plan the best location for your homelift.

They can also answer any questions you might have, as can any of the friendly, UK-based phone team.

So, why not give your lifestyle a lift with Stiltz. Call FREE today.



The UK's No.1 Homelift

- Speedy service
- Cost-effective
- Small footprint
- Freestanding design - no wall needed
- Wheelchair model available
- Manufactured, installed and fully guaranteed by Stiltz
- 3-floor travel available

For a FREE brochure or no obligation survey

Call FREE on 0808 258 7942
or visit www.stiltz.co.uk

Stiltz
Homelifts



2020

Fundraising superheroes

We can't thank you enough for all you do to show your love and support to NAWT. Your gifts, donations and fundraising help pets overcome the toughest challenges of their lives.



Daisy Beard

When beagle Tess was rehomed from Clacton Centre to Daisy and her family six years ago, it was the beginning of a very special friendship.

"When we first got Tess, she was very nervous but she soon became confident and felt at home. Now she walks around our large garden with her best four-legged friend, Yanni, and four Shetland ponies whom she very much loves. My boyfriend describes Tess as being like a cartoon character. She has many expressions and is very cheeky."

Now Daisy is hoping to transform the lives of other dogs by taking on her first London marathon to raise funds for NAWT.

"My family are my inspiration for the marathon – I am a sibling of six and the only one not to have completed one. Even my amazing mum ran the London Marathon at 53 years old after going through breast cancer."

Daisy works full-time so fits all her training around her busy schedule. "I'm out the door by 5 am – Tess hasn't even got out of bed by then! I am looking forward to being at the finish line surrounded by my friends and family with a large glass of wine or two!!"

You can support Daisy's challenge here:
<https://www.justgiving.com/fundraising/daisy-beard-tess>



Adam Mills

This summer Adam and a few friends are attempting to trek up Britain's highest mountain – Ben Nevis – to raise money for NAWT.

Adam is no stranger to outdoor challenges having hiked Snowdon four times and England's highest peak, Scafell Pike, in the Lake District.

This time he has decided to turn his hobby into a fundraising challenge after being inspired by his own beloved rescue dog, a Romanian Shepherd called Luna.

Adam came across NAWT when he and his partner Lauren attended an open day a few years ago. Adam heard about the new centre rebuild going on at Bedfordshire and decided it was the perfect fundraising pledge.

He said: "NAWT offers amazing support and rehabilitation to lots of animals which is something that really resonates with us."

Adam's trek is in August and if you'd like to support him then please visit his page.
<https://www.justgiving.com/page/adam-mills-1674823158888>



Helen Cattran-Dunlop

Taking part in the London Marathon has always been on Helen's bucket list ever since she took up running.

She immediately knew her chosen charity as soon as she secured her place in the race from her running group, Hayle Runners.

Two of her five dogs were rehomed from the NAWT Cornwall Centre in Hayle – small mixed-breed Cherry (now Pip) in 2019 and a Chihuahua called Hunter (now known as Newt) last year.

Helen works as a receptionist at Animal Vets in Hayle, which is one of the vets, used by our Cornwall centre.

She said: "I know how important the charity is and I would like to raise as much money as possible to help with all the fantastic work that the NAWT does. If it wasn't for them, then lots of animals wouldn't get a second chance."

Competing in the marathon has another personal meaning for Helen as she was diagnosed with multiple sclerosis two years ago.

"I refuse to let it stop me running and it's made me more determined to keep going."

You can support Helen on her Justgiving page [justgiving.com/campaign/runhelenrun](https://www.justgiving.com/campaign/runhelenrun)

If Daisy, Matt and Helen's stories have inspired you to fundraise for NAWT, there are so many ways you can help. If you'd like to talk to our team then either contact your local centre or call our head office on 020 8950 0177 (option 1). We can provide posters and leaflets as well as offer advice and tips on how to make your event go smoothly.

Your love for animals can live on

We are extremely fortunate to have animal lovers like you choosing to leave NAWT a legacy of some kind after remembering loved ones first. These donations are a lifeline to our charity as one in every two animals we care for are covered by these gifts. There are many ways you can leave a loving reminder beyond your lifetime.

Funeral collections

Most funeral directors will be able to offer advice when it comes to organising a funeral collection. We also have envelopes available from the centres for families wishing to arrange something independently at the funeral service.



In-memory giving

It's very easy these days to arrange an online collection in memory of a loved one. Again, some funeral directors can set up services on your behalf or you can do it independently through sites such as JustGiving.com, MemoryGiving.com, Muchloved.com, collectionpot.com. Online giving sites make it easy for people to donate wherever they are based.

Pet care card

The Pet Care Card is a free service that will guarantee you peace of mind, knowing that your pet's future will be a safe and happy one after your lifetime. We will always endeavour to find a responsible, caring owner to provide your pet with the tender and loving care you currently do. If, in the unlikely event we can't find your furry friend a home, we will look after them for the rest of their natural life.



Scan to find out more



Memorial gardens

Whether it's a four-legged friend you wish to memorialise or even for a loved one, most of our centres have beautiful memorial gardens to host a plaque and offer a quiet place to sit and contemplate.



Memorial garden, Hertfordshire



Memorial garden, Cornwall

Gifts in wills

We know that writing a will can seem a little overwhelming for many people. That's why NAWT have partnered with Farewill, the largest will writer in the UK, to offer a free will writing service* that can be done online or on the phone.



Scan to find out more

Around the centres



Cornwall



Rehoming ups and downs

The past few months have been full of highs and lows at Cornwall. With more rehoming requests than normal due to the rise in cost of living, it has been busier than ever.

The lows are fortunately accompanied by the highs. More animals have found their forever homes and our team love receiving visits from former rescue dogs looking happier than ever. 2023 has been a rollercoaster so far but it's certainly one we don't want to get off!



Essex

The big freeze

All the centre's pipes were frozen for a week in December. It made cleaning and animal care very difficult. We immediately issued an appeal asking for help from the local community and were quickly inundated with support. Everything from bottled water to new bedding and blankets arrived within hours of the call going out. We are incredibly grateful for the support.

Hertfordshire



Boarding

Last year we started offering cat boarding at our site and now we are in the process of applying for a licence for dog boarding. With its close proximity to Clacton's popular seaside and beaches, we are hoping to offer both daycare and longer stays to both locals and visitors alike.

Bedfordshire



Berkshire

New passport scheme launched for visitors

Our farm location offers families a chance to meet a wide range of animals from alpacas to tortoises. We launched our animal passport initiative in February. Designed for families, visitors can purchase a passport and as they tour the site, they will receive a different stamp for every question answered relating to the different species of animal and attractions they come across.



Buy-a-brick

We are looking forward to welcoming animals to our new centre later this year (read more about our rebuild on page 3). The latest fundraising initiative is our Buy-a-brick campaign which allows anyone to purchase a brick in honour of our history.

Buy your brick here



Visiting our centres and shops

NAWT Bedfordshire

Glebe Farm, Salford Road, Aspley Guise, Milton Keynes, MK17 8HZ
Open by appointment only
T 01908 584000

NAWT Woburn Sands Shop

41 High Street, Woburn Sands, Milton Keynes, MK17 8RB
T 01908 587401

NAWT Berkshire

Trindledown Farm, Wantage Road, Great Shefford, Berkshire RG17 7DQ
T 01488 638 584
Open Tuesday - Sunday
10am to 4pm

NAWT Cornwall

Wheal Alfred Kennels, Wheal Alfred Road, Hayle, Cornwall TR27 5JT
T 01736 756 005
Open daily 11am to 3pm
(Closed Tuesdays)

NAWT Hayle Shop

Suite 1-2 Foundry House, Foundry Square, Hayle TR27 4HH
T 01736 759 707

NAWT Essex

The Street, Little Clacton, Essex CO16 9LG
T 01255 860 062
Open daily 11am to 4pm
(Closed Tuesdays)

NAWT Thurrock

Rehoming and General enquiries
T 01375 393 663

NAWT Hertfordshire

Tylers Way, Watford, Hertfordshire WD25 8WT
T 020 8950 0177 (Option 2)
Open daily 11am to 4pm
(Closed Tuesdays)

NAWT Watford Shop

2 New Road, Watford WD17 2EX
T 01923 227 141